




Left-hand Slurs

A slur in music is a curved line that connects two different notes.

Here is an example: 

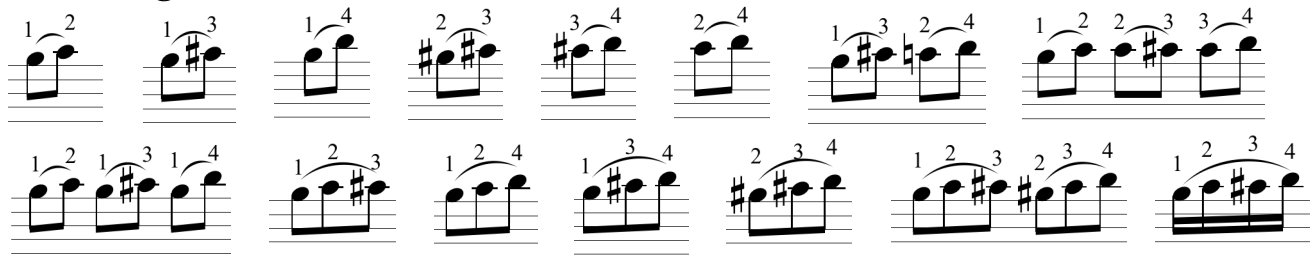
The curved line indicates that notes are to be played without separation. In other words, the second note is to be played without re-plucking the string. Bassists sometimes refer to ascending slurs as *hammer-ons* and descending slurs as *pull-offs*. Let's explain how to play a slur.

Place your index finger of your *left hand on the first string at the fourth (this is the note B on a 4 and 5-string bass). Pluck the string with a right-hand finger or with a pick. Once the note B is sounding, quickly place your left-hand middle finger on the string at the fifth fret (this is the note C). This snappy motion should result in a *slurred* note sounding at the fifth fret without re-plucking the string.

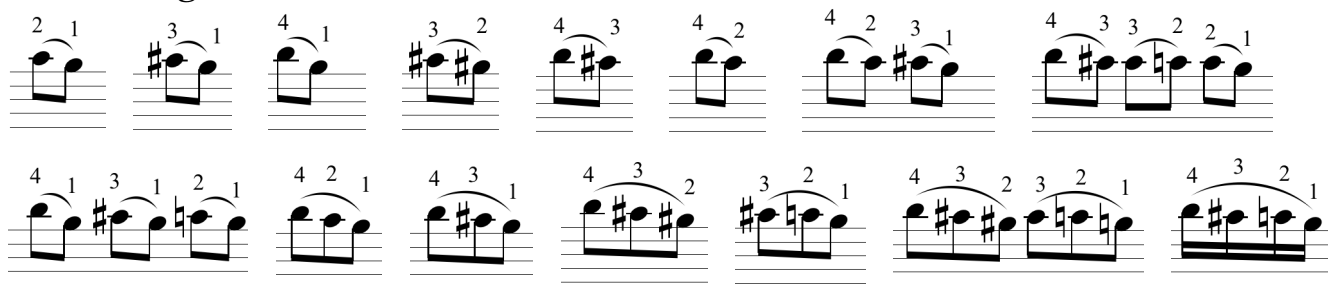
*Switch hands throughout the explanation if you play the guitar left handed.

Bassists should strive to master the follow slurs. Only pluck the first note of each slurred group of two, three, or four notes:

Ascending Slurs:



Descending Slurs:



Ascending and descending slurs can also be combined to make longer slurred exercises and trills, etc.

Practice slurs on all strings and positions throughout the bass guitar fretboard.