




Left-hand Slurs

A slur in music is a curved line that connects two different notes.

Here is an example: 

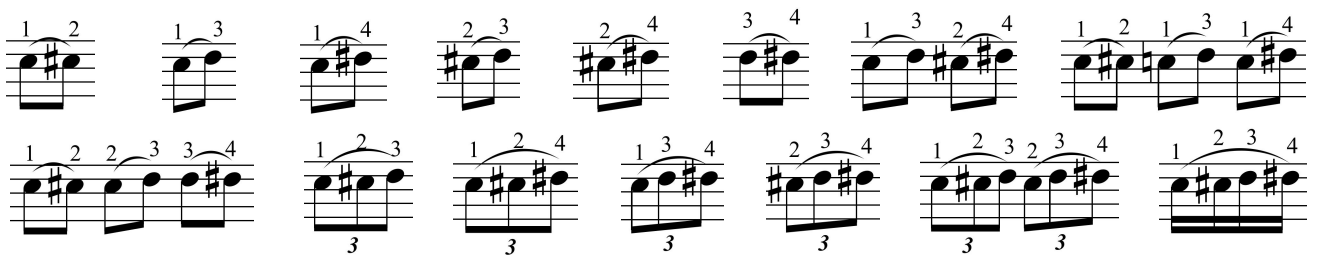
The curved line indicates that notes are to be played without separation. In other words, the second note is to be played without re-plucking the string. Guitarists sometimes refer to ascending slurs as *hammer-ons* and descending slurs as *pull-offs*. Let's explain how to play a slur.

First, place your index finger of your *left hand on the first fret of the second string (this is the note C). Pluck the string with a right-hand finger or with a guitar pick. Once the note is sounding, quickly place your left-hand middle finger on the string at the second fret (this is the note C#). This snappy motion should result in a *slurred* note sounding at the second fret without re-plucking with the right hand.

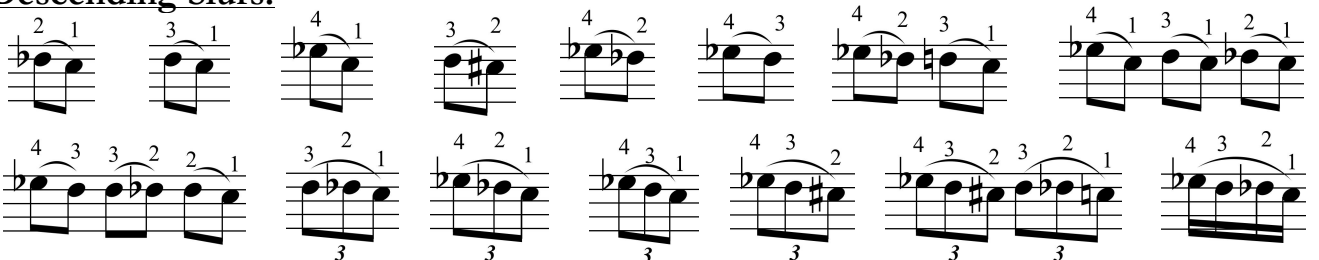
*Switch hands throughout the explanation if you play the guitar left handed.

Here are some slurs that every guitarist should strive to master. Only pluck the first note of each two, three, or four note slurred group.

Ascending Slurs:



Descending Slurs:



Ascending and descending slurs can also be combined to make longer slurred exercises and trills, etc.

Practice slurs on all strings and positions throughout the guitar fretboard.